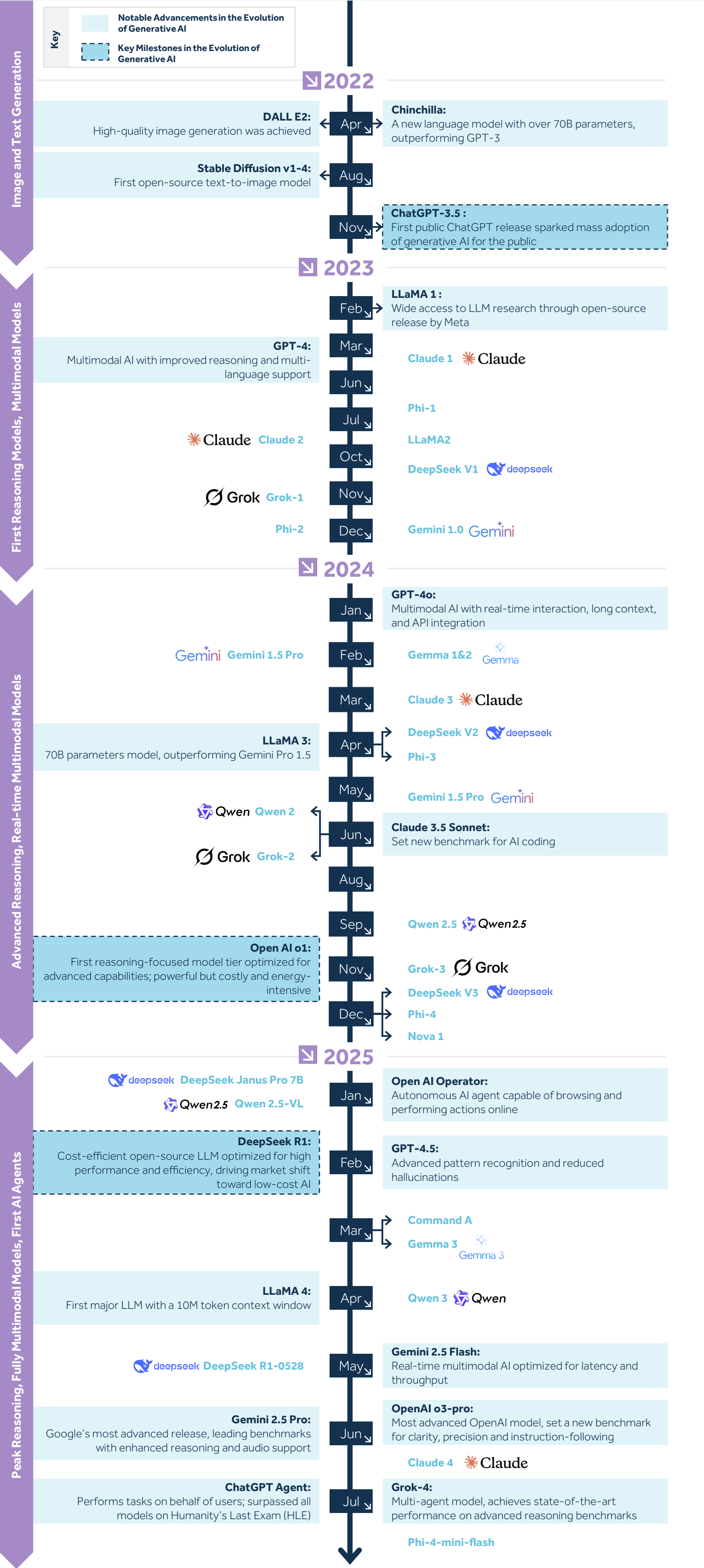
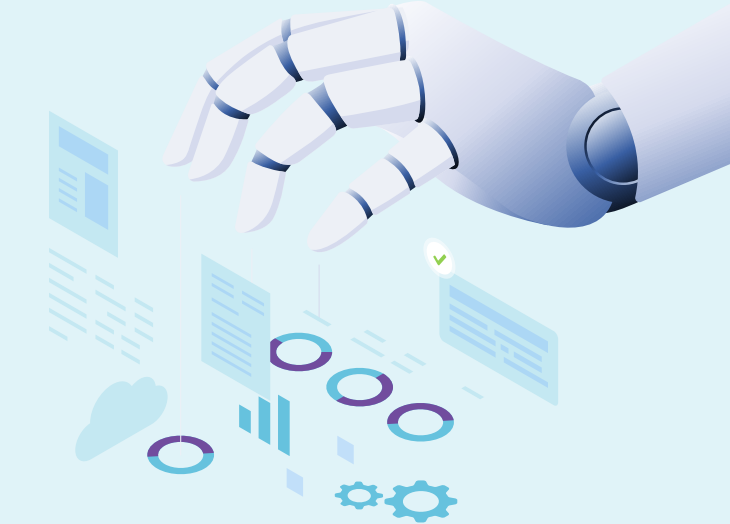


Unlocking the Generative AI Era

Between 2022 and 2025, generative AI expanded through the mass adoption of commercial and open-source models by the public. This period is marked by the launch of advanced and specialized models that developed from text and image- generating LLMs to multimodal models with high reasoning capabilities



- The timeline traces AI’s evolution from 2022’s specialized models like DALL·E 2 and Stable Diffusion to data-efficient large language models (LLMs)
- In 2023, generative AI saw mass adoption with ChatGPT and GPT-4 ‘s multimodality. Open-source models like LLaMA 1 made advanced AI research widely accessible
- By 2024, AI advanced to real-time multimodal interaction and advanced reasoning with GPT-4o, Gemini, and Grok 3. Models like o1 and LLaMA 3.2 brought reasoning and vision capabilities to mobile devices
- In 2025, fully multimodal and reasoning-centric models like o3 Pro, Gemini 2.5 Pro, and Grok-4 emerged while OpenAI Operator marks a shift toward autonomous AI agents